



King of the Hill

Summer Series on Wednesday's at 7pm
For 12 weeks May 19 - August 11
Bowl on Different Sport Patterns Each Week

Roger's Southsiders

Sunday 6:00 pm

04/25/2010 Week 17 of 18

Lanes 27 - 48

Stardust Bowl

Secretary/Treasurer: ROGER BLAYLOCK is on Lane 33



Send us a Friend Request on www.Facebook.com/StardustBowl3

League Standing Sheets are on www.BowlStardust.com Sign up for Email Alerts
~Join our Email List! Get League updates, Open Bowl Specials & Coupons!

===== U P C O M I N G T O U R N A M E N T S =====

~King of the Hill Wednesday's @ 7:00pm May 19 - Aug 18

~40 Frame Game Tournament: ALL Summer May 15 - August 15 Any Day, Any Time

~Join a fall league & qualify for the Bowler of the Year Tournament in May



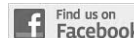
Find us on Facebook

House Jackpots - Enter by the 3rd Frame

~Strike Lotto \$2.00 Entry @ the Front Desk 180 & Under 181 & Over Divisions

~High Roller Jackpot. You Bowl It, You Win a % of the Jackpot!

270-279 = 10% 280-289 = 15% 290-299 = 25% ~300~ = 50%



Find us on Facebook

Team Standings

| Place | Lane | # | Team Name | Points Won | Points Lost | %Won | Scratch Pins | Pins + HDCP | High Game | HDCP Game | High Sers | HDCP Sers | Year-To-Date WON | Y-T-D LOST | Y-T-D % WON |
|-------|------|----|--------------------|------------|-------------|------|--------------|-------------|-----------|-----------|-----------|-----------|------------------|------------|-------------|
| 1 | 31 | 4 | PIN PALS | 43 | 13 | 76.8 | 29101 | 40168 | 679 | 886 | 1884 | 2505 | 77 | 42 | 64.7 |
| 2 | 47 | 22 | FIRST PLACE TEAM | 40 | 16 | 71.4 | 31892 | 40778 | 723 | 883 | 2070 | 2568 | 83 | 36 | 69.7 |
| 3 | 46 | 19 | LIVING ON A SPARE | 36 | 20 | 64.3 | 30231 | 40233 | 736 | 926 | 1994 | 2564 | 64 | 55 | 53.8 |
| 4 | 43 | 12 | Team 12 | 35 | 21 | 62.5 | 39780 | 41439 | 937 | 966 | 2656 | 2743 | 78 | 41 | 65.5 |
| 5 | 30 | 8 | URGE | 34 | 22 | 60.7 | 31439 | 40127 | 720 | 888 | 2001 | 2505 | 77 | 42 | 64.7 |
| 6 | 44 | 20 | STRIKES AND SPARE | 34 | 22 | 60.7 | 30449 | 39712 | 697 | 873 | 1967 | 2495 | 58 | 61 | 48.7 |
| 7 | 33 | 6 | SURE WIN | 33 | 23 | 58.9 | 27055 | 39472 | 581 | 832 | 1642 | 2420 | 58 | 61 | 48.7 |
| 8 | 37 | 1 | WE ARE JUST HERE | 32 | 24 | 57.1 | 31076 | 39716 | 707 | 873 | 1953 | 2460 | 72 | 47 | 60.5 |
| 9 | 27 | 9 | BOWLING SKANKS | 32 | 24 | 57.1 | 26231 | 38785 | 608 | 858 | 1743 | 2493 | 56 | 63 | 47.0 |
| 10 | 42 | 16 | SHINE OUR BALLS | 29 | 27 | 51.8 | 24257 | 39227 | 576 | 862 | 1612 | 2470 | 60 | 59 | 50.4 |
| 11 | 28 | 11 | MISSION IMPOSSIBO | 28 | 28 | 50.0 | 29592 | 40164 | 654 | 851 | 1888 | 2503 | 57 | 62 | 47.9 |
| 12 | 38 | 10 | MOVING ON UP | 28 | 28 | 50.0 | 28771 | 39679 | 671 | 878 | 1814 | 2435 | 62 | 57 | 52.1 |
| 13 | 34 | 17 | FIVE BALLS AND TW | 28 | 28 | 50.0 | 27615 | 39477 | 649 | 853 | 1745 | 2357 | 60 | 59 | 50.4 |
| 14 | 36 | 3 | THE 4 F,S | 26 | 30 | 46.4 | 34079 | 40163 | 780 | 902 | 2167 | 2542 | 53 | 66 | 44.5 |
| 15 | 35 | 15 | The BM,S | 23 | 33 | 41.1 | 30559 | 40162 | 715 | 894 | 2044 | 2581 | 65 | 54 | 54.6 |
| 16 | 32 | 21 | WE BOWL LIKE SPLIT | 23 | 33 | 41.1 | 28067 | 40649 | 655 | 885 | 1820 | 2510 | 72 | 47 | 60.5 |
| 17 | 48 | 13 | Team 13 | 22 | 34 | 39.3 | 18025 | 25624 | 520 | 772 | 1560 | 2316 | 37 | 82 | 31.1 |
| 18 | 45 | 2 | POPAKOWSKI,S | 20 | 36 | 35.7 | 28748 | 39365 | 669 | 883 | 1837 | 2479 | 52 | 67 | 43.7 |
| 19 | 29 | 5 | LUCKY STRIKES | 19 | 37 | 33.9 | 30774 | 39435 | 674 | 848 | 1903 | 2410 | 53 | 66 | 44.5 |
| 20 | 39 | 7 | Team #7 | 18 | 38 | 32.1 | 25073 | 39095 | 612 | 896 | 1617 | 2466 | 35 | 84 | 29.4 |
| 21 | 41 | 14 | Mother Chuckers | 17 | 39 | 30.4 | 23506 | 38716 | 565 | 868 | 1571 | 2480 | 37 | 82 | 31.1 |
| 22 | 40 | 18 | Signature Split | 14 | 42 | 25.0 | 24440 | 38930 | 607 | 894 | 1560 | 2365 | 40 | 79 | 33.6 |

Review of Last Week's Bowling.....

| Lanes | Team Name | HDCP -1- | HDCP -2- | HDCP -3- | HDCP Total | Last Wk WON | Team Name | HDCP -1- | HDCP -2- | HDCP -3- | HDCP Total | Last Wk WON |
|-------|------------------|----------|----------|----------|------------|-------------|------------------|----------|----------|----------|------------|-------------|
| 27-28 | PIN PALS | 868 | 751 | 886 | 2505 | 5 | Team 12 | 777 | 802 | 868 | 2447 | 2 |
| 29-30 | FIRST PLACE TEAM | 842 | 808 | 883 | 2533 | 7 | STRIKES AND SPA | 783 | 796 | 788 | 2367 | 0 |
| 31-32 | LIVING ON A SPAR | 832 | 784 | 806 | 2422 | 5 | SURE WIN | 814 | 826 | 764 | 2404 | 2 |
| 33-34 | WE ARE JUST HER | 752 | 762 | 825 | 2339 | 3 | BOWLING SKANKS | 759 | 770 | 704 | 2233 | 4 |
| 35-36 | URGE | 799 | 888 | 818 | 2505 | 7 | THE 4 F,S | 782 | 824 | 772 | 2378 | 0 |
| 37-38 | MOVING ON UP | 791 | 766 | 878 | 2435 | 2 | SHINE OUR BALLS | 862 | 839 | 769 | 2470 | 5 |
| 39-40 | Team 13 | 772 | 772 | 772 | 2316 | 2 | MISSION IMPOSSIB | 775 | 851 | 745 | 2371 | 5 |
| 41-42 | FIVE BALLS AND T | 817 | 738 | 784 | 2339 | 5 | WE BOWL LIKE SP | 840 | 690 | 753 | 2283 | 2 |
| 43-44 | The BM,S | 824 | 831 | 758 | 2413 | 4 | POPAKOWSKI,S | 769 | 827 | 883 | 2479 | 3 |
| 45-46 | LUCKY STRIKES | 756 | 732 | 771 | 2259 | 4 | Team #7 | 751 | 779 | 749 | 2279 | 3 |
| 47-48 | Mother Chuckers | 760 | 797 | 758 | 2315 | 2 | Signature Split | 783 | 798 | 740 | 2321 | 5 |

Lane Assignments

27-28 29-30 31-32 33-34 35-36 37-38 39-40 41-42 43-44 45-46 47-48
18 05/09 9-11 5-8 4-21 6-17 15-3 1-10 7-18 14-16 12-20 2-19 22-13 *Manually assigned*

Individual High Averages

| Men | 216.36 | ALEX BODNAR | Women | 192.77 | NIKKI MATUSIK |
|-----|--------|----------------|-------|--------|---------------|
| | 207.06 | GEORGE GOODMUN | | 184.57 | MINDY ADAMS |

High Ave

| | |
|--------|--------------|
| 203.18 | RICK LONG |
| 200.71 | DUKE POPA |
| 199.44 | KARL MARX |
| 192.57 | RON FREY |
| 189.69 | DON BANE |
| 188.55 | TOM YEARSICH |
| 179.55 | RICH FISHER |
| 179.04 | JEFF YATSKO |

High Ave

| | |
|--------|---------------------|
| 160.39 | CAROLYN MCCARTER |
| 159.96 | NANCY Dzialakiewicz |
| 155.38 | DEBBIE FREY |
| 152.49 | TRACY YEARSICH |
| 150.98 | KATHY GANNON |
| 144.93 | SUE MASLANKA |
| 143.49 | ROBYN FREEL |
| 140.86 | DAWN FISHER |

Season High Scores

| Team Scratch Game | | Team Scratch Series | | Team Handicap Game | | Team Handicap Series | |
|-------------------|-------------------------|---------------------|---------------------|--------------------|-------------------|----------------------|---------------------|
| 937 | Team 12 | 2656 | Team 12 | 966 | Team 12 | 2743 | Team 12 |
| 780 | THE 4 F,S | 2167 | THE 4 F,S | 926 | LIVING ON A SPARE | 2581 | The BM,S |
| 736 | LIVING ON A SPARE | 2070 | FIRST PLACE TEAM | 902 | THE 4 F,S | 2568 | FIRST PLACE TE |
| Scratch Game | | Scratch Series | | Handicap Game | | Handicap Series | |
| Men | 279 ALEX BODNAR | 741 | ALEX BODNAR | 301 | JEFF YATSKO | 742 | GEORGE GOODMUN |
| | 279 JEFF YATSKO | 736 | GEORGE GOODMUN | 282 | TIM MASLANKA | 741 | ALEX BODNAR |
| | 277 GEORGE GOODMUN | 700 | KARL MARX | 279 | ALEX BODNAR | 733 | JEFF YATSKO |
| | 275 KARL MARX | 687 | RICK LONG | 279 | GEORGE GOODMUN | 731 | JOHN MCGILL |
| | 269 DUKE POPA | 683 | DUKE POPA | 278 | NIGEL AKERMAN | 708 | RON FREY |
| Women | 277 NIKKI MATUSIK | 748 | NIKKI MATUSIK | 288 | NIKKI MATUSIK | 781 | NIKKI MATUSIK |
| | 234 MINDY ADAMS | 615 | MINDY ADAMS | 260 | DIANA DEPISA | 716 | DEBBIE FREY |
| | 217 DEBBIE FREY | 596 | DEBBIE FREY | 258 | GLORIA PESTIKAS | 686 | NANCY Dzialakiewicz |
| | 212 NANCY Dzialakiewicz | 572 | NANCY Dzialakiewicz | 257 | DEBBIE FREY | 676 | KATHY MATUSIK |
| | 201 DIANA DEPISA | 523 | CAROLYN MCCARTE | 256 | ARIANNE AKERMAN | 672 | KIM VANDERVOORT |

Most Improved Average

Men 167 to 179.04 = +12.04 JEFF YATSKO 183 to 192.57 = +9.57 RON FREY 155 to 163.29 = +8.29 DAN BONIOR
Women 16 to 124.29 = +8.29 KIM VANDERVO 121 to 128.76 = +7.76 KANDY WHISEN 187 to 192.77 = +5.77 NIKKI MATUSIK

Last Week's Top Scores

| Team Scratch Game | | Team Scratch Series | | Team Handicap Game | | Team Handicap Series | |
|-------------------|-------------------------|---------------------|---------------------|--------------------|------------------|----------------------|------------------|
| 847 | Team 12 | 2384 | Team 12 | 888 | URGE | 2533 | FIRST PLACE TE |
| 723 | FIRST PLACE TEAM | 2053 | FIRST PLACE TEAM | 886 | PIN PALS | 2505 | PIN PALS |
| 720 | URGE | 2021 | THE 4 F,S | 883 | POPAKOWSKI,S | 2505 | URGE |
| | | | | 883 | FIRST PLACE TEAM | | |
| Scratch Game | | Scratch Series | | Handicap Game | | Handicap Series | |
| Men | 279 ALEX BODNAR | 741 | ALEX BODNAR | 279 | ALEX BODNAR | 741 | ALEX BODNAR |
| | 269 DUKE POPA | 681 | RON FREY | 277 | RON FREY | 731 | JOHN MCGILL |
| | 268 RON FREY | 648 | DUKE POPA | 274 | JOHN MCGILL | 708 | RON FREY |
| | 246 JOHN MCGILL | 647 | JOHN MCGILL | 269 | DUKE POPA | 685 | BOB FARMER |
| | 237 NIGEL AKERMAN | 616 | RICK LONG | 259 | NIGEL AKERMAN | 683 | JOHN TUCKER |
| | | 616 | BOB FARMER | | | | |
| Women | 225 NIKKI MATUSIK | 573 | NIKKI MATUSIK | 260 | DIANA DEPISA | 646 | THERESA KOWALSKI |
| | 206 MINDY ADAMS | 539 | MINDY ADAMS | 241 | DEBI BURNS | 643 | NORMA HUMYAK |
| | 201 DIANA DEPISA | 482 | CAROLYN MCCARTE | 240 | NORMA HUMYAK | 642 | MELISSA SWINFORD |
| | 187 SUE MASLANKA | 478 | NANCY Dzialakiewicz | 238 | SUE MASLANKA | 636 | MARYANN LAROTUN |
| | 180 NANCY Dzialakiewicz | 474 | SUE MASLANKA | 233 | TRISH TUCKER | 630 | DEBI BURNS |
| | | | | | | 630 | Brandi Jean |

Weekly Game Over Average

Game - Ave = Difference

| | | |
|--------------|----------------|--------------|
| Men | 268 - 190 = 78 | RON FREY |
| | 246 - 168 = 78 | JOHN MCGILL |
| | 269 - 199 = 70 | DUKE POPA |
| Women | 201 - 134 = 67 | DIANA DEPISA |
| | 158 - 107 = 51 | DEBI BURNS |
| | 179 - 132 = 47 | NORMA HUMYAK |

Weekly Series over Average

Series - Ave = Difference

| | |
|-----------------|------------------|
| 647 - 504 = 143 | JOHN MCGILL |
| 681 - 570 = 111 | RON FREY |
| 518 - 414 = 104 | JOHN TUCKER |
| 388 - 312 = 76 | THERESA KOWALSKI |
| 402 - 333 = 69 | MELISSA SWINFORD |
| 460 - 396 = 64 | NORMA HUMYAK |

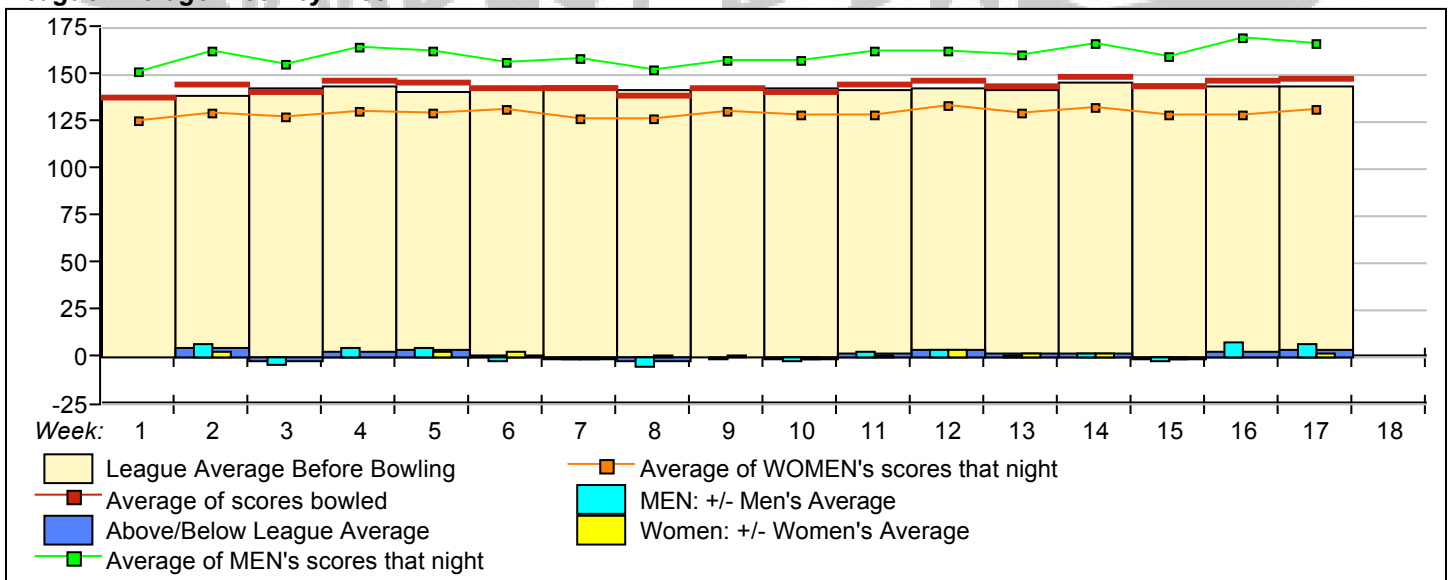
Team Rosters

| Name | True Average | HDCP | Pins | Gms | -1- | -2- | -3- | Total | HDCP Total | High Game | HDCP High Game | High Sers | HDCP Sers | To Raise Avg +1 | To Drop Avg -1 | 225's | 650's | Most Improved Ave +/- |
|--|--------------|------|------|-----|-----|-----|-----|-------|------------|-----------|----------------|-----------|-----------|-----------------|----------------|-------|-------|-----------------------|
| 1 - WE ARE JUST HERE FOR Lane 37 HDCP=168 Ave=611 | | | | | | | | | | | | | | | | | | |
| JENNIFER FLORES | 113.38 | 78 | 5442 | 48 | 151 | 90 | 98 | 339 | 573 | 154 | 231 | 385 | 618 | 372 | 320 | -- | -- | 114 -0.63 |
| NANCY Dzialakiewicz | 159.96 | 36 | 7678 | 48 | 120 | 180 | 178 | 478 | 586 | 212 | 250 | 572 | 686 | 482 | 430 | -- | -- | 160 -0.04 |
| DAVE FLORES | 161.20 | 35 | 8221 | 51 | 152 | 160 | 180 | 492 | 597 | 232 | 268 | 551 | 659 | 527 | 472 | 1 | -- | 160 +1.20 |
| KEN URNIK | 178.71 | 19 | 7506 | 42 | 161 | 164 | 201 | 526 | 583 | 238 | 257 | 647 | 704 | 549 | 503 | 1 | -- | 178 +0.71 |

| Name | True Average | HDCP | Pins | Gms | -1- | -2- | -3- | Total | HDCP Total | High Game | HDCP Game | High Sers | HDCP Sers | To Raise Avg +1 | To Drop Avg -1 | 225's | 650's | Most Improved Ave +/- |
|---------------------------------|--------------|----------|---------------|---------|------|-----|-----|-------|------------|-----------|-----------|-----------|-----------|-----------------|----------------|-------|-------|-----------------------|
| 2 - POPAKOWSKI,S | Lane 45 | HDCP=210 | Ave=565 | | | | | | | | | | | | | | | |
| WANDA POPA | 125.06 | 67 | 6003 | 48 | 115 | 143 | 128 | 386 | 590 | 169 | 234 | 399 | 597 | 423 | 371 | -- | -- | 128 -2.94 |
| THERESA KOWALSKI | 106.27 | 84 | 5420 | 51 | 104 | 146 | 138 | 388 | 646 | 146 | 232 | 388 | 646 | 358 | 303 | -- | -- | 104 +2.27 |
| JOHN KOWALSKI | 134.12 | 59 | 5633 | 42 | 141 | 140 | 134 | 415 | 595 | 190 | 252 | 482 | 668 | 442 | 396 | -- | -- | 134 +0.12 |
| DUKE POPA | 200.71 | 0 | 9634 | 48 | 195 | 184 | 269 | 648 | 648 | 269 | 269 | 683 | 683 | 617 | 565 | 12 | 4 | 197 +3.71 |
| 3 - THE 4 F,S | Lane 36 | HDCP=119 | Ave=666 | | | | | | | | | | | | | | | |
| DEBBIE FREY | 155.38 | 40 | 7458 | 48 | 158 | 125 | 116 | 399 | 516 | 217 | 257 | 596 | 716 | 498 | 446 | 1 | -- | 157 -1.63 |
| DAWN FISHER | 140.86 | 54 | 7184 | 51 | 111 | 148 | 142 | 401 | 560 | 187 | 241 | 469 | 634 | 430 | 375 | -- | -- | 137 +3.86 |
| RON FREY | 192.57 | 7 | 9821 | 51 | 202 | 268 | 211 | 681 | 708 | 268 | 277 | 681 | 708 | 601 | 546 | 5 | 2 | 183 +9.57 |
| RICH FISHER | 179.55 | 18 | 9157 | 51 | 192 | 164 | 184 | 540 | 594 | 235 | 253 | 589 | 649 | 563 | 508 | 4 | -- | 175 +4.55 |
| 4 - PIN PALS | Lane 31 | HDCP=203 | Ave=573 | | | | | | | | | | | | | | | |
| SUE MASLANKA | 144.93 | 50 | 6087 | 42 | 187 | 135 | 152 | 474 | 627 | 192 | 244 | 491 | 647 | 438 | 392 | -- | -- | 143 +1.93 |
| ANDY MASLANKA | 131.31 | 62 | 6697 | 51 | 117 | 104 | 180 | 401 | 587 | 180 | 242 | 423 | 606 | 431 | 376 | -- | -- | 134 -2.69 |
| KIM VANDERVOORT | 124.29 | 68 | 6339 | 51 | 136 | 132 | 146 | 414 | 621 | 164 | 236 | 456 | 672 | 411 | 356 | -- | -- | 116 +8.29 |
| TIM MASLANKA | 174.00 | 23 | 8700 | 50 | 221 | 173 | 201 | 595 | 670 | 256 | 282 | 595 | 670 | 575 | 521 | 1 | -- | 166 +8.00 |
| 5 - LUCKY STRIKES | Lane 29 | HDCP=175 | Ave=605 | | | | | | | | | | | | | | | |
| NORMA HUMYAK | 133.44 | 60 | 6405 | 48 | 165 | 116 | 179 | 460 | 643 | 191 | 254 | 479 | 668 | 429 | 377 | -- | -- | 131 +2.44 |
| LARRY GANNON | 151.22 | 44 | 7712 | 51 | 114 | 126 | 123 | 363 | 489 | 209 | 249 | 497 | 617 | 496 | 441 | -- | -- | 158 -6.78 |
| HARRY HUMYAK | 171.69 | 26 | 8756 | 51 | 180 | 176 | 160 | 516 | 594 | 216 | 237 | 549 | 612 | 532 | 477 | 2 | -- | 176 -4.31 |
| KATHY GANNON | 150.98 | 45 | 6341 | 42 | 125 | 142 | 137 | 404 | 533 | 199 | 244 | 511 | 646 | 454 | 408 | -- | -- | 150 +0.98 |
| 6 - SURE WIN | Lane 33 | HDCP=257 | Ave=512 | | | | | | | | | | | | | | | |
| KANDY WHISENHUNT | 128.76 | 64 | 6567 | 51 | 167 | 131 | 135 | 433 | 628 | 178 | 244 | 457 | 655 | 399 | 344 | -- | -- | 121 +7.76 |
| KIRK WHISENHUNT | 137.18 | 56 | 6996 | 51 | 154 | 152 | 124 | 430 | 601 | 196 | 253 | 445 | 616 | 456 | 401 | -- | -- | 137 +0.18 |
| Andrea Cooper | 93.67 | 96 | 1405 | 15 | 86 | 126 | 108 | 320 | 617 | 126 | 225 | 320 | 617 | 287 | 268 | -- | -- | |
| ROGER BLAYLOCK | 154.98 | 41 | 7439 | 48 | 146 | 156 | 136 | 438 | 558 | 191 | 231 | 509 | 632 | 466 | 414 | -- | -- | 157 -2.02 |
| 7 - Team #7 | Lane 39 | HDCP=274 | Ave=493 | | | | | | | | | | | | | | | |
| MICHELE BARTELS | 118.25 | 73 | 5676 | 48 | 125 | 127 | 113 | 365 | 584 | 162 | 236 | 394 | 616 | 393 | 341 | -- | -- | 119 -0.75 |
| RUSS BOERSMA | 138.57 | 55 | 5820 | 42 | 119 | 146 | 147 | 412 | 577 | 180 | 236 | 478 | 652 | 435 | 389 | -- | -- | 135 +3.57 |
| DOUG TURNER | 143.57 | 51 | 6030 | 42 | 151 | 113 | 144 | 408 | 558 | 201 | 252 | 478 | 628 | 450 | 404 | -- | -- | 146 -2.43 |
| TRICIA TURNER | 94.83 | 95 | 3983 | 42 | 84 | 121 | 73 | 278 | 560 | 136 | 235 | 366 | 663 | 292 | 246 | -- | -- | 90 +4.83 |
| 8 - URGE | Lane 30 | HDCP=166 | Ave=618 | | | | | | | | | | | | | | | |
| ERIN BISCHOFF | 133.31 | 60 | 6799 | 51 | 126 | 136 | 141 | 403 | 583 | 159 | 220 | 430 | 613 | 437 | 382 | -- | -- | 132 +1.31 |
| JILLIAN MCGILL | 111.19 | 80 | 4670 | 42 | 94 | 123 | 118 | 335 | 575 | 170 | 253 | 363 | 612 | 370 | 324 | -- | -- | 108 +3.19 |
| JOHN MCGILL | 171.51 | 26 | 8747 | 51 | 210 | 246 | 191 | 647 | 731 | 246 | 274 | 647 | 731 | 541 | 486 | 2 | -- | 167 +4.51 |
| RICK LONG | 203.18 | 0 | 10362 | 51 | 201 | 215 | 200 | 616 | 616 | 253 | 253 | 687 | 687 | 654 | 599 | 13 | 5 | 207 -3.82 |
| 9 - BOWLING SKANKS | Lane 27 | HDCP=246 | Ave=524 | | | | | | | | | | | | | | | |
| KATIE ANDERSON | 108.79 | 82 | 5222 | 48 | 86 | 106 | 105 | 297 | 540 | 164 | 245 | 385 | 637 | 337 | 285 | -- | -- | 106 +2.79 |
| APRIL BONIOR | 118.38 | 73 | 5564 | 47 | 124 | 131 | 111 | 366 | 585 | 146 | 222 | 390 | 612 | 386 | 335 | -- | -- | 117 +1.38 |
| DAN BONIOR | 163.29 | 33 | 8328 | 51 | 188 | 183 | 143 | 514 | 616 | 237 | 273 | 541 | 654 | 528 | 473 | 1 | -- | 155 +8.29 |
| SHANNON ANDERSON | 135.10 | 58 | 6485 | 48 | 116 | 105 | 100 | 321 | 492 | 165 | 222 | 449 | 620 | 451 | 399 | -- | -- | 136 -0.90 |
| 10 - MOVING ON UP | Lane 38 | HDCP=204 | Ave=572 | | | | | | | | | | | | | | | |
| GLORIA PESTIKAS | 121.86 | 71 | 4387 | 36a111a | 111a | 111 | 333 | | 546 | 186 | 258 | 414 | 630 | 371 | 331 | -- | -- | 120 +1.86 |
| DIANA DEPISA | 134.51 | 59 | 5515 | 41 | 105 | 106 | 201 | 412 | 589 | 201 | 260 | 424 | 601 | 425 | 380 | -- | -- | 134 +0.51 |
| STEVE PESTIKAS | 142.96 | 52 | 6433 | 45 | 143 | 164 | 165 | 472 | 631 | 191 | 245 | 484 | 646 | 431 | 382 | -- | -- | 143 -0.04 |
| VINCE DEPISA | 175.13 | 22 | 8406 | 48 | 225 | 178 | 194 | 597 | 669 | 225 | 249 | 597 | 669 | 570 | 518 | 2 | -- | 169 +6.13 |
| 11 - MISSION IMPOSSIBOWL | Lane 28 | HDCP=195 | Ave=581 | | | | | | | | | | | | | | | |
| JUDY GONZALES | 128.17 | 64 | 6152 | 48 | 132 | 137 | 154 | 423 | 618 | 161 | 228 | 423 | 621 | 427 | 375 | -- | -- | 123 +5.17 |
| ROBYN FREEL | 143.49 | 51 | 7318 | 51 | 157 | 159 | 117 | 433 | 586 | 175 | 227 | 483 | 639 | 458 | 403 | -- | -- | 144 -0.51 |
| JACK MESECK | 137.17 | 56 | 6584 | 48 | 139 | 159 | 132 | 430 | 601 | 177 | 239 | 501 | 687 | 454 | 402 | -- | -- | 132 +5.17 |
| KEITH FREEL | 173.37 | 24 | 8842 | 51 | 150 | 199 | 145 | 494 | 566 | 236 | 264 | 617 | 701 | 554 | 499 | 3 | -- | 169 +4.37 |
| 12 - Team 12 | Lane 43 | HDCP=21 | Ave=791 | | | | | | | | | | | | | | | |
| MINDY ADAMS | 184.57 | 14 | 7752 | 42 | 206 | 170 | 163 | 539 | 581 | 234 | 250 | 615 | 669 | 573 | 527 | 2 | -- | 180 +4.57 |
| ALEX BODNAR | 216.36 | 0 | 9087 | 42 | 183 | 279 | 279 | 741 | 741 | 279 | 279 | 741 | 741 | 678 | 632 | 17 | 8 | 214 +2.36 |
| NIKKI MATUSIK | 192.77 | 7 | 8482 | 44 | 199 | 149 | 225 | 573 | 594 | 277 | 288 | 748 | 781 | 589 | 541 | 8 | 4 | 187 +5.77 |
| KARL MARX | 199.44 | 0 | 8975 | 45 | 168 | 183 | 180 | 531 | 531 | 275 | 275 | 700 | 700 | 625 | 576 | 9 | 2 | 206 -6.56 |
| 13 - Team 13 | Lane 48 | HDCP=252 | Ave=520 | | | | | | | | | | | | | | | |
| VACANT | 54 | 0 | 0v140v140v140 | 420 | 582 | 0 | | | | | 0 | | | | | -- | -- | |
| VACANT | 54 | 0 | 0v140v140v140 | 420 | 582 | 0 | | | | | 0 | | | | | -- | -- | |
| VACANT | 72 | 0 | 0v120v120v120 | 360 | 576 | 0 | | | | | 0 | | | | | -- | -- | |
| VACANT | 72 | 0 | 0v120v120v120 | 360 | 576 | 0 | | | | | 0 | | | | | -- | -- | |
| 14 - Mother Chuckers | Lane 41 | HDCP=300 | Ave=465 | | | | | | | | | | | | | | | |
| RICHARD FLORES | 147.51 | 47 | 7523 | 51 | 137 | 166 | 154 | 457 | 598 | 194 | 239 | 480 | 624 | 469 | 414 | -- | -- | 151 -3.49 |
| JAMIE FLORES | 88.31 | 100 | 4504 | 51 | 63 | 87 | 101 | 251 | 551 | 130 | 230 | 293 | 590 | 302 | 247 | -- | -- | 88 +0.31 |
| Dustin Neuliep | 120.36 | 72 | 3972 | 33 | 145 | 137 | 109 | 391 | 607 | 147 | 222 | 439 | 664 | 384 | 347 | -- | -- | 119 +1.36 |
| Kellie Marion | 110.36 | 81 | 3973 | 36 | 115 | 107 | 94 | 316 | 559 | 136 | 219 | 359 | 602 | 356 | 316 | -- | -- | 109 +1.36 |

| Name | True Average | HDCP | Pins | Gms | -1- | -2- | -3- | Total | HDCP | | | | | To Raise Avg +1 | To Drop Avg -1 | 225's | 650's | Most Improved | |
|--|--------------|------|------|-----|------|------|-----|-------|-------|-----------|-----------|-----------|-----------|-----------------|----------------|-------|-------|---------------|---------|
| | | | | | | | | | Total | High Game | HDCP Game | High Sers | HDCP Sers | | | | | Ave +/- | Ave +/- |
| 15 - The BM,S Lane 35 HDCP=173 Ave=604 | | | | | | | | | | | | | | | | | | | |
| DEBBIE BANE | 118.62 | 73 | 5338 | 45 | 122 | 116 | 135 | 373 | 592 | 142 | 216 | 395 | 623 | 374 | 325 | -- | -- | 115 | +3.62 |
| KATHY MATUSIK | 138.83 | 55 | 5831 | 42 | 151 | 152 | 117 | 420 | 585 | 189 | 243 | 514 | 676 | 424 | 378 | -- | -- | 143 | -4.17 |
| JOHN MATUSIK | 159.58 | 36 | 7181 | 45 | 143 | 191 | 149 | 483 | 591 | 201 | 241 | 545 | 665 | 499 | 450 | -- | -- | 155 | +4.58 |
| DON BANE | 189.69 | 9 | 7967 | 42 | 234 | 198 | 183 | 615 | 645 | 234 | 244 | 615 | 645 | 583 | 537 | 4 | -- | 187 | +2.69 |
| 16 - SHINE OUR BALLS Lane 42 HDCP=281 Ave=485 | | | | | | | | | | | | | | | | | | | |
| MELISSA SWINFORD | 112.98 | 79 | 5762 | 51 | 143 | 135 | 124 | 402 | 642 | 143 | 223 | 402 | 642 | 340 | 285 | -- | -- | 116 | -3.02 |
| JOSEPH SWINFORD | 127.61 | 65 | 6508 | 51 | 125 | 147 | 123 | 395 | 590 | 190 | 256 | 444 | 642 | 404 | 349 | -- | -- | 127 | +0.61 |
| Brandi Jean | 129.05 | 63 | 2710 | 21 | 144 | 155 | 133 | 432 | 630 | 163 | 232 | 433 | 640 | 410 | 385 | -- | -- | | |
| DAVID JANOCHA | 117.31 | 74 | 5983 | 51 | 164 | 116 | 103 | 383 | 608 | 171 | 247 | 415 | 643 | 389 | 334 | -- | -- | 115 | +2.31 |
| 17 - FIVE BALLS AND TWO SPLITS Lane 34 HDCP=205 Ave=571 | | | | | | | | | | | | | | | | | | | |
| LEIGHA ZAJAC | 120.39 | 72 | 5899 | 49 | 140 | 103 | 116 | 359 | 575 | 152 | 220 | 375 | 579 | 393 | 340 | -- | -- | 124 | -3.61 |
| JASON ZAJAC | 130.63 | 63 | 6662 | 51 | 170 | 107 | 118 | 395 | 584 | 170 | 233 | 446 | 632 | 412 | 357 | -- | -- | 131 | -0.37 |
| DORIAN LUBERT | 126.39 | 66 | 6446 | 51 | 131 | 154 | 140 | 425 | 626 | 168 | 235 | 425 | 626 | 412 | 357 | -- | -- | 127 | -0.61 |
| BENITO SAENZ | 195.83 | 4 | 3525 | 18 | 173 | 171 | 207 | 551 | 554 | 262 | 262 | 630 | 632 | 591 | 569 | 3 | -- | | |
| 18 - Signature Split Lane 40 HDCP=288 Ave=478 | | | | | | | | | | | | | | | | | | | |
| LAURA MEYER | 115.98 | 76 | 5219 | 45 | 120 | 142 | 86 | 348 | 576 | 157 | 232 | 380 | 605 | 349 | 300 | -- | -- | 117 | -1.02 |
| VAUGHN NEWMAN | 146.02 | 48 | 6133 | 42 | 135 | 128 | 154 | 417 | 561 | 219 | 264 | 496 | 631 | 482 | 436 | 1 | -- | 149 | -2.98 |
| DANNY TUCKER | 102.02 | 88 | 4795 | 47 | 121 | 121 | 102 | 344 | 611 | 147 | 237 | 344 | 611 | 355 | 304 | -- | -- | 102 | +0.02 |
| JOYCE TUCKER | 115.52 | 76 | 5545 | 48 | 118 | 118 | 109 | 345 | 573 | 168 | 246 | 424 | 658 | 371 | 319 | -- | -- | 113 | +2.52 |
| 19 - LIVING ON A SPARE Lane 46 HDCP=183 Ave=594 | | | | | | | | | | | | | | | | | | | |
| TRISH TUCKER | 138.56 | 55 | 6651 | 48 | 139 | 109 | 178 | 426 | 591 | 178 | 233 | 483 | 654 | 438 | 386 | -- | -- | 138 | +0.56 |
| JOHN TUCKER | 140.08 | 54 | 7144 | 51 | 155 | 187 | 176 | 518 | 683 | 192 | 249 | 518 | 683 | 470 | 415 | -- | -- | 137 | +3.08 |
| BECKY YATSKO | 137.19 | 56 | 6585 | 48 | 119 | 128 | 121 | 368 | 533 | 191 | 248 | 495 | 666 | 453 | 401 | -- | -- | 136 | +1.19 |
| JEFF YATSKO | 179.04 | 18 | 8594 | 48 | 235 | 176 | 147 | 558 | 615 | 279 | 301 | 667 | 733 | 586 | 534 | 3 | 1 | 167 | +12.04 |
| 20 - STRIKES AND SPARES Lane 44 HDCP=174 Ave=613 | | | | | | | | | | | | | | | | | | | |
| MARYANN LAROTUNDA | 121.73 | 71 | 6208 | 51 | 124 | 148 | 148 | 420 | 636 | 162 | 234 | 420 | 636 | 380 | 325 | -- | -- | 120 | +1.73 |
| CAROLYN MCCARTER | 160.39 | 36 | 8180 | 51 | 171 | 147 | 164 | 482 | 590 | 186 | 222 | 523 | 631 | 514 | 459 | -- | -- | 164 | -3.61 |
| BOB MULVIHILL | 125.12 | 67 | 6256 | 50 | 116 | 129 | 104 | 349 | 550 | 171 | 241 | 432 | 639 | 422 | 368 | -- | -- | 121 | +4.12 |
| GEORGE GOODMUN | 207.06 | 0 | 6833 | 33a | 197a | 197a | 197 | 591 | 591 | 277 | 279 | 736 | 742 | 655 | 618 | 8 | 4 | 208 | -0.94 |
| 21 - WE BOWL LIKE SPLIT Lane 32 HDCP=223 Ave=549 | | | | | | | | | | | | | | | | | | | |
| NIGEL AKERMAN | 177.22 | 20 | 9038 | 51 | 237 | 193 | 178 | 608 | 674 | 253 | 278 | 622 | 694 | 574 | 519 | 4 | -- | 170 | +7.22 |
| ARIANNE AKERMAN | 118.65 | 73 | 6051 | 51 | 126 | 103 | 125 | 354 | 573 | 182 | 256 | 430 | 652 | 375 | 320 | -- | -- | 117 | +1.65 |
| SAMANTHA HALL | 115.16 | 76 | 5873 | 51 | 124 | 81 | 99 | 304 | 529 | 177 | 252 | 402 | 624 | 391 | 336 | -- | -- | 113 | +2.16 |
| NATE AKERMAN | 139.31 | 54 | 7105 | 51 | 129 | 89 | 127 | 345 | 507 | 175 | 230 | 465 | 627 | 455 | 400 | -- | -- | 138 | +1.31 |
| 22 - FIRST PLACE TEAM Lane 47 HDCP=156 Ave=624 | | | | | | | | | | | | | | | | | | | |
| DEBI BURNS | 108.75 | 82 | 5546 | 51 | 108 | 115 | 158 | 381 | 630 | 158 | 241 | 381 | 630 | 340 | 285 | -- | -- | 104 | +4.75 |
| TRACY YEARSICH | 152.49 | 43 | 6862 | 45 | 173 | 121 | 152 | 446 | 575 | 176 | 218 | 476 | 602 | 482 | 433 | 1 | -- | 154 | -1.51 |
| BOB FARMER | 176.61 | 21 | 9007 | 51 | 212 | 199 | 205 | 616 | 685 | 222 | 249 | 616 | 697 | 551 | 496 | 2 | -- | 170 | +6.61 |
| TOM YEARSICH | 188.55 | 10 | 9616 | 51 | 189 | 213 | 208 | 610 | 643 | 247 | 259 | 662 | 707 | 590 | 535 | 6 | 2 | 182 | +6.55 |

League Average Week-by-Week



****Last Week's High Scores for Immediate Release ****

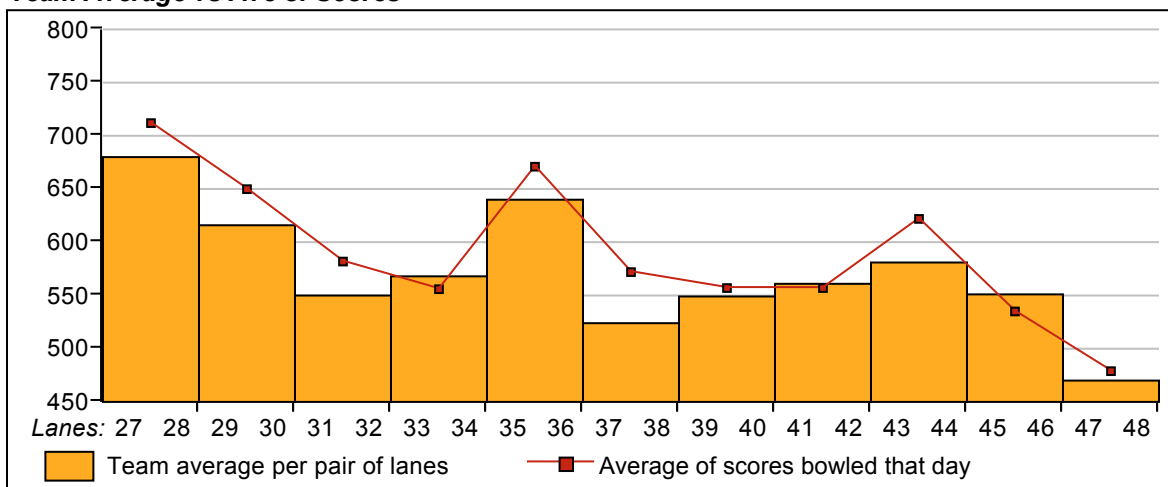
| | <u>Scratch Game</u> | <u>Scratch Game</u> | <u>Scratch Series</u> | <u>Scratch Series</u> |
|--------------|-------------------------|----------------------|-------------------------|-----------------------|
| Men | 279 ALEX BODNAR | 215 RICK LONG | 741 ALEX BODNAR | 595 TIM MASLANKA |
| | 279 ALEX BODNAR | 213 TOM YEARSICH | 681 RON FREY | 558 JEFF YATSKO |
| | 269 DUKE POPA | 212 BOB FARMER | 648 DUKE POPA | 551 BENITO SAENZ |
| | 268 RON FREY | 211 RON FREY | 647 JOHN MCGILL | 540 RICH FISHER |
| | 246 JOHN MCGILL | 210 JOHN MCGILL | 616 RICK LONG | 531 KARL MARX |
| | 237 NIGEL AKERMAN | 208 TOM YEARSICH | 616 BOB FARMER | 526 KEN URNIK |
| | 235 JEFF YATSKO | 207 BENITO SAENZ | 615 DON BANE | 518 JOHN TUCKER |
| | 234 DON BANE | 205 BOB FARMER | 610 TOM YEARSICH | 516 HARRY HUMYAK |
| | 225 VINCE DEPISA | 202 RON FREY | 608 NIGEL AKERMAN | 514 DAN BONIOR |
| | 221 TIM MASLANKA | 201 KEN URNIK | 597 VINCE DEPISA | 494 KEITH FREEL |
| Women | 225 NIKKI MATUSIK | 171 CAROLYN MCCARTE | 573 NIKKI MATUSIK | 426 TRISH TUCKER |
| | 206 MINDY ADAMS | 170 MINDY ADAMS | 539 MINDY ADAMS | 425 DORIAN LUBERT |
| | 201 DIANA DEPISA | 167 KANDY WHISENHUNT | 482 CAROLYN MCCARTE | 423 JUDY GONZALES |
| | 199 NIKKI MATUSIK | 165 NORMA HUMYAK | 478 NANCY Dzialakiewicz | 420 KATHY MATUSIK |
| | 187 SUE MASLANKA | 164 CAROLYN MCCARTE | 474 SUE MASLANKA | 420 MARYANN LAROTUN |
| | 180 NANCY Dzialakiewicz | 163 MINDY ADAMS | 460 NORMA HUMYAK | 414 KIM VANDERVOORT |
| | 179 NORMA HUMYAK | 159 ROBYN FREEL | 446 TRACY YEARSICH | 412 DIANA DEPISA |
| | 178 NANCY Dzialakiewicz | 158 DEBBIE FREY | 433 KANDY WHISENHUNT | 404 KATHY GANNON |
| | 178 TRISH TUCKER | 158 DEBI BURNS | 433 ROBYN FREEL | 403 ERIN BISCHOFF |
| | 173 TRACY YEARSICH | 157 ROBYN FREEL | 432 Brandi Jean | 402 MELISSA SWINFORD |

STARDUST BOWL III

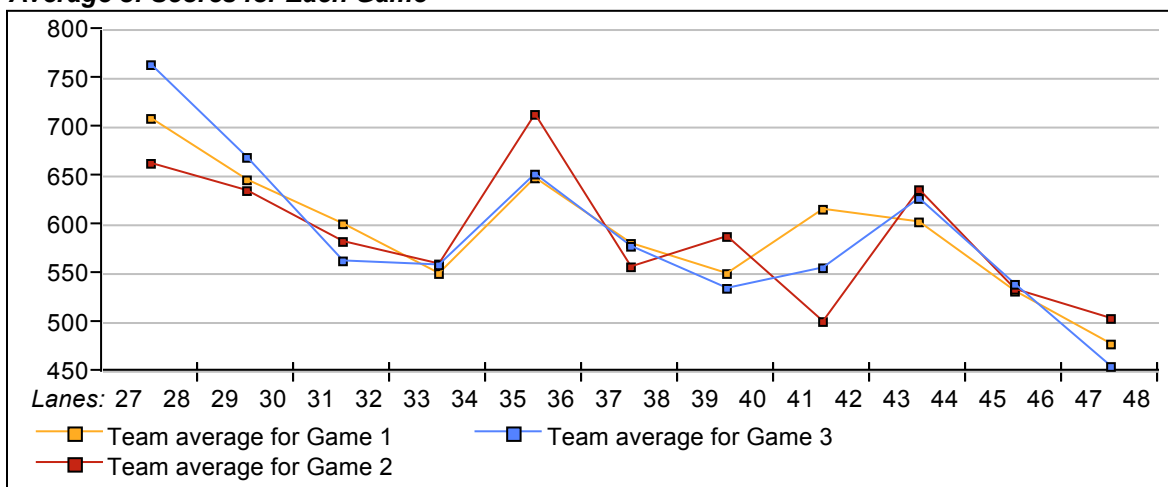
This Week's Statistics

| | <u>Over All</u> | <u>Men</u> | <u>Women</u> |
|-----------------------------------|-----------------|------------|--------------|
| How many people bowled | 82 | 40 | 42 |
| Number of games bowled | 246 | 120 | 126 |
| Actual average of week's scores | 148.11 | 166.18 | 130.90 |
| How many games above average | 143 | 69 | 74 |
| How many games below average | 99 | 49 | 50 |
| Pins above/below average per game | 4.95 | 7.21 | 2.80 |
| How many people raised average | 53 | 29 | 24 |
| by this amount | 0.84 | 0.89 | 0.77 |
| How many people went down | 29 | 11 | 18 |
| by this amount | -0.69 | -0.97 | -0.52 |
| League average before bowling | 143.65 | 159.48 | 128.58 |
| League average after bowling | 143.95 | 159.86 | 128.80 |
| Change in league average | 0.30 | 0.38 | 0.22 |
| 800s | -- | -- | -- |
| 775s | -- | -- | -- |
| 750s | -- | -- | -- |
| 725s | 1 | 1 | -- |
| 700s | -- | -- | -- |
| 675s | 1 | 1 | -- |
| 650s | -- | -- | -- |
| 625s | 2 | 2 | -- |
| 600s | 5 | 5 | -- |
| 575s | 2 | 2 | -- |
| 550s | 3 | 2 | 1 |
| 525s | 4 | 3 | 1 |
| 500s | 3 | 3 | -- |
| 475s | 5 | 3 | 2 |
| 450s | 4 | 2 | 2 |
| 425s | 9 | 3 | 6 |
| 400s | 14 | 5 | 9 |
| below 400 | 29 | 8 | 21 |
| 300s | -- | -- | -- |
| 275s | 2 | 2 | -- |
| 250s | 2 | 2 | -- |
| 225s | 6 | 5 | 1 |
| 200s | 16 | 14 | 2 |
| 175s | 33 | 27 | 6 |
| 150s | 43 | 24 | 19 |
| 125s | 69 | 27 | 42 |
| 100s | 61 | 18 | 43 |
| below 100 | 14 | 1 | 13 |

Team Average vs Ave of Scores



Average of Scores for Each Game



Amount Over/Under Team Average

